

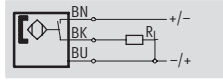
Proximity sensors SMEO-1, block-shaped, magnetic reed

FESTO

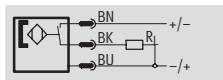
Technical data

Function

e.g. N/O contact, 3-wire, with cable



e.g. N/O contact, 3-wire, with plug



- Magnetic reed measuring principle



Design	
Constructional design	Block-shaped
Type of mounting	Via accessories
Connection direction	In-line
Reproducibility of switching point ¹⁾ [mm]	±0.1

1) Only applicable to drives secured against rotation.

Technical data – N/O contact, 3-wire				
Switching element function			N/O contact	
Switch output			Conventional contact, bipolar	
Electrical connection			Cable, 3-wire	Plug M8x1, 3-pin
Cable length	[m]		2.5	5.0
Operating voltage range	DC	[V DC]	12 ... 27	
Max. output current	DC	[mA]	1,000	
Max. switching capacity	DC	[W]	27	
Switch-on time		[ms]	≤0.5	
Switch-off time		[ms]	≤0.03	
Protection against short circuit			No	
Protection against polarity reversal			No	
Protection class			IP67	
Switching status display			Yellow LED	

Technical data – N/O contact, heat resistant				
Switching element function			N/O contact	
Switch output			Conventional contact, bipolar	
Electrical connection			Cable, 2-wire	
Cable length	[m]		2.5	
Operating voltage range	DC	[V DC]	0 ... 200	
	AC	[V AC]	0 ... 250	
Max. output current	DC	[mA]	1,000	
	AC	[mA]	1,000	
Max. switching capacity	DC	[W]	40	
	AC	[VA]	40	
Switch-on time		[ms]	≤0.5	
Switch-off time		[ms]	≤0.03	
Protection against short circuit			No	
Protection against polarity reversal			No	
Protection class			IP67	
Switching status display			–	

Proximity sensors SMEO-1, block-shaped, magnetic reed

Technical data

FESTO

Technical data – N/O contact, 2-wire					
Switching element function			N/O contact		
Switch output			Conventional contact, bipolar ¹⁾		Conventional contact, bipolar
Electrical connection			Cable, 2-wire		Plug M8x1, 2-pin
Cable length [m]			2.5	5.0	2.5
Operating voltage range	DC	[V DC]	5 ... 200		0 ... 200
	AC	[V AC]	5 ... 250		0 ... 250
Max. output current	DC	[mA]	500		1,000
	AC	[mA]	500		1,000
Max. switching capacity	DC	[W]	40		40
	AC	[VA]	40		40
Voltage drop [V]			4.1		–
Switch-on time [ms]			≤0.5		–
Switch-off time [ms]			≤0.03		–
Protection against short circuit			No		–
Protection against polarity reversal			No		–
Protection class			IP67		–
Switching status display			Yellow LED	Yellow LED	–

1) Without LED function.

Operating and environmental conditions					
Electrical connection		Cable		Cable, heat resistant	
Cable installation		Fixed	Flexible	Fixed	Flexible
Ambient temperature [°C]		–20 ... +70	–5 ... +70	–10 ... +120	–5 ... +120
Corrosion resistance class CRC ¹⁾		4		4	2
CE symbol (declaration of conformity)		In accordance with EU EMC directive ²⁾		In accordance with EU low voltage directive	In accordance with EU EMC directive
		In accordance with EU low voltage directive ³⁾			

- 1) Corrosion resistance class 2 according to Festo standard 940 070
Components requiring moderate corrosion resistance. Externally visible parts with primarily decorative surface requirements which are in direct contact with a normal industrial environment or media such as coolants or lubricating agents.
Corrosion resistance class 4 according to Festo standard 940 070
Components requiring higher corrosion resistance. Parts used with aggressive media, e.g. food or chemical industry. These applications should be supported with special tests with the media if required.
- 2) Only valid for N/O contact, 3-wire, operating voltage range 12 ... 27 V DC and for N/O contact, 2-wire, operating voltage range 5 ... 250 V AC / 5 ... 200 V DC.
- 3) Only valid for N/O contact, 2-wire, with cable.

Materials	
Housing	Die-cast zinc, polyester
Cable sheath	Polyurethane
Note on materials	Free of copper and PTFE

Product weights [g]			
Electrical connection		Cable	
Cable length [m]		2,5	5,0
N/O contact			
3-wire		85	130
2-wire		100(85) ¹⁾	130
2-wire, heat resistant		130	–

2) Value in brackets only valid for operating voltage range 0 ... 250 V AC / 0 ... 200 V DC.

Proximity sensors SMEO-1, block-shaped, magnetic reed

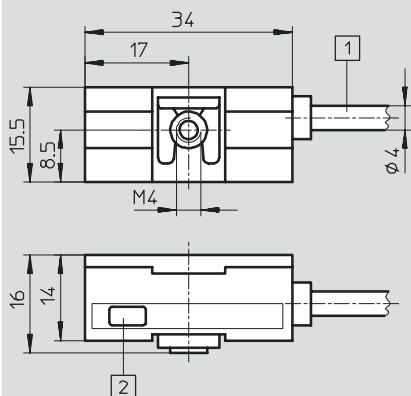
FESTO

Technical data

Dimensions

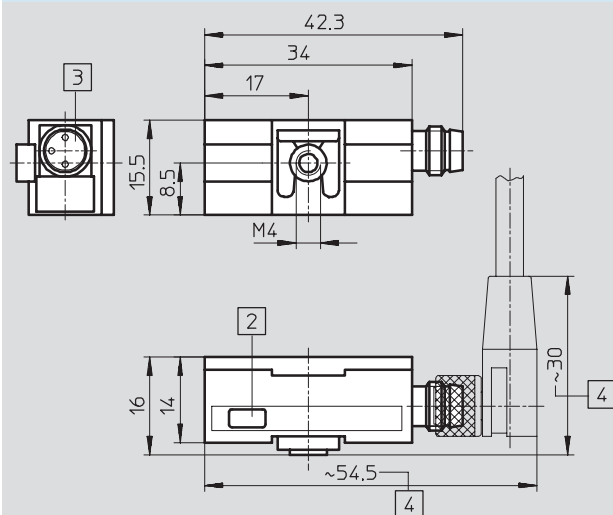
Download CAD data → www.festo.com/en/engineering

Cable type




- 1 Connecting cable
- 2 Yellow LED

Plug type M8x1



- 2 Yellow LED
- 3 Plug suitable for plug socket with cable NEBU-M8...
- 4 Installation space for angled socket

Ordering data

	Electrical connection		Cable length [m]	Switching status display via LED	Part No.	Type
	Cable	Plug M8x1				
	N/O contact					
	Operating voltage range 12 ... 27 V DC					
	3-wire	–	2.5	■	30 459	SMEO-1-LED-24-B
	3-wire	–	5.0	■	151 672	SMEO-1-LED-24-K5-B
	–	3-pin	–	■	150 848	SMEO-1-S-LED-24-B
	Operating voltage range 0 ... 250 V AC, 0 ... 200 V DC					
	2-wire	–	2.5	–	30 457	SMEO-1-B
	2-wire	–	2.5	■	151 671	SMEO-1-LED-230-B
	2-wire	–	5.0	■	160 998	SMEO-1-LED-230-K5-B
	Heat resistant up to 120°C					
	2-wire	–	2.5	–	151 673	SMEO-1-S6-C
	Operating voltage range 0 ... 30 V DC					
	–	3-pin ¹⁾	–	–	150 847	SMEO-1-S-24-B

1) The proximity sensor has 2 wires internally. One pin of the M8 plug is unused.